

**www.EntraPASS.com**

High Security Exit Devices

*In or Out...we make it Easy!*<sup>®</sup>

**120 Series**

Switch Bar  
(no latch or strike)

**1200 Series**

High-Security  
Mechanical  
Rim Exit Device



**1300 Series**

High-Security  
Electric  
Rim Exit Device



**Lever Trim 08**

Key locks or unlocks trim  
UL Certified to  
ANSI/BMHA  
A156.3-1994,  
Grade 1



**Pull Trim 03P**

Entrance by key retracting  
latch bolt



Patented Interlocking  
Strike and Latch



**Features**

**1200 / 1300 Exit Devices**

- cULus listed (3-hour Fire Exit Hardware)
- Weather resistant for outdoor use
- Current of less than 800mA for 12VDC and 400mA for 24VDC is required to unlock the device or to dog it unlocked. (Fire rated devices must be powered through contact of a fire-alarm system delay)
- All devices re-latch
- Camlock and cylinder dogging available (for non-fire labeled doors)
- Choice of 3 standard alarm modules
- Standard lengths for 36" (3 feet) and 48" (4 feet) doors
- Can be field cut for undersized doors
- Non-handed for installing on all types of doors, including narrow stile aluminum.
- High security, exceeding a 1" dead bolt
- Model 1300 includes a 12/24VDC dual voltage continuous-duty solenoid which provides a remote unlock feature for controlled entry.

**120 Switch Bar**

- SPDT or two SPDT signal switches deactivate electric locks and/or activate a remote alarm when push bar is pressed.

**Lever and Pull Trim**

- Compatible with 1200/1300 Series exit devices

**Model 08 Lever Trim**

- Handing standard LHR; field reversible to RHR
- Vandal-resistant - Lever is not restricted in the locked position
- UL certified for fire doors

**High Security Exit Devices**

The 1200 and 1300 Series exit devices resolve the conflict between life safety and security.

Both 1200 Mechanical and 1300 Electric Series exit devices feature a patented latch that rotates to engage and grip the specially designed strike. This unique interlocking grip action secures the door to the jamb without conventional roller strikes or retracting latches.

In addition an interlocking mechanism located in the chassis offers a double interlocking system which makes these exit devices virtually impossible to tamper with, pry or force open.

The attractive lever trim can be used on the exterior side of the door for access.

**Highlights**

- Strong Protection, Fast Release
- Non-handed
- Interlocking strike & latch design (1200/1300 Series)
- 3-Year Limited Warranty
- Made in the USA

**Applications**

- Use 120, 1200 or 1300 Series with any 3 or 4-foot-wide doors
- Use with all types of doors, including narrow-stile aluminum
- Any exterior door exposed to possible tampering

**Options & Accessories**

**120/1200/1300 Series**

- 1200C/1300C..... Cylinder dogging
- 1200D/1300D..... Cam lock dogging
- 1200F/1300F..... Fire labeled exit device, no dogging
- 10..... Alarm module (9V battery supplied)
- 20..... 10-26 VDC alarm module (remote power with battery backup; 9V battery supplied)
- 30..... 10-26 VDC alarm module (remote power only)
- SS1..... SPDT Signal Switches
- SS2..... Two SPDT Signal Switches
- LMS..... Lock Monitor Switch
- DDS..... Double Door Strike

**Trim Options**

- 08-L..... Lever Trim
- 08N-L..... Narrow stile lever trim
- 08E-L..... Electrified lever trim
- 08NE-L..... Narrow stile electrified lever trim
- 03-P..... Pull Trim

**Finishes**

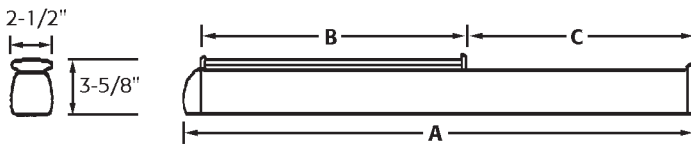
- 28..... Aluminum (BHMA 628)
- 40..... Dark Duranodic (BHMA 710)

## Specifications

1200/1300 Series	
Signal Switches*	Activated by depressing push bar. Switches can be specified for all types of access controls. <b>SS1</b> – SPDT rated 3A@30VDC (Inductive), 4A @ 30VDC (Resistive) <b>SS2</b> – 2SPDT rated 3A @ 30VDC (Inductive), 4A @ 30VDC (Resistive)
Lock Monitor Switch	For remote alarm monitoring of latch position. Normally opened, normally closed contacts.
Push Bar Inserts	Black vinyl insert supplied. Allows inserts to be added by removing push bar end cap and sliding insert into the groove of the push bar.
Patented Interlock	Strike and latch are stainless steel, heat-treated and tempered. Tensile strength 200,000 PSI.
Alarm Module	<b>10</b> – Operated by a 9V alkaline battery (supplied) <b>20</b> – Remotely powered field-selectable 10 to 26VDC power with a 9V battery backup (supplied) <b>30</b> – Remotely powered field-selectable 10 to 26VDC power. 1300 Series can be unlatched remotely without sounding the alarm. When cylinder supplied by others, specify 15/16" through 1-1/8" with Yale A Cam (Cylinders sold separately). Signal switches SS1 and SS2 are available with all alarm modules.
Alarm Module Current Draw	<b>Alarm Module 10</b> – 0.5 microA in Standby position; 16mA when sounding <b>Alarm Module 20</b> – 0.5 microA in Standby position; 16mA when sounding <b>Alarm Module 30</b> – 0.5 microA in Standby position; 16mA when sounding
Alarm Horn Power	110db piezo horn; field-selectable continuous horn or 3 to 5-minute sound and reset; field-selectable intermittent beep or steady horn. Activated by depressing push bar when in the "Alarm On" position.
Low Battery Alert	Audible chirp indicates low battery (1 chirp/minute). Activated by 7.6 volts
Current Draw	Electrified Trim 155mA@24VDC <b>1300 Solenoid</b> 800mA @ 12VDC, 400mA@24VDC
1200/1300 Series Certification	Accepted by NYC MEA 337-92M, Listed by CA State Fire Marshal; ADA compliant <b>Models with A.C or D suffix;</b> cULus Listed Panic Hardware ANSI/BMHA A156.3-2001, Grade 1, <b>Models with F suffix;</b> cULus Fire Exit Hardware rated 3 hours, ANSI/BMHA A156.3, Grade 1 Conforms to ANSI/UL10C and UBC 7-2 (1997)

\*Rating for SS1 and SS2 applies to Model 120 also.

### 120/1200/1300 Series



### 08 Series Lever Trim

UL Certified to ANSI/BHMA  
156.3, Grade 1  
ADA Compliant

MODEL NO.	A	B	C	DOOR WIDTH	FIELD-CUT C FOR DOOR WIDTHS
120A/1200A/1300A	34-3/8"	18"	15"	36"	22" to 35"
120D/1200C & D/1300C & D	34-5/8"	18"	15"	36"	24" to 35"
1200F/1300F	34-3/8"	18"	15"	36"	27" to 35"
L120A/L1200A/L1300A	46-3/8"	24"	21"	48"	28" to 47"
L120D/L1200C & D/L1300C & D	46-3/8"	24"	21"	48"	30" to 47"
L1200F/L1300F	46-3/8"	24"	21"	48"	39" to 47"

NOTE: Not to scale. Specifications are subject to change without notice.

EntraPASS also offers a complete line of Electromagnetic Locks, Electric Strikes, Power Supplies, Switches, Keypads & Readers, Exit Devices, Systems & Door Hardware.