

DATA & PAN-TILT-ZOOM SERIES



DTX-900 - 900MHz IP-67 All-Weather Digital Data Transmitter Only - Range 7 miles

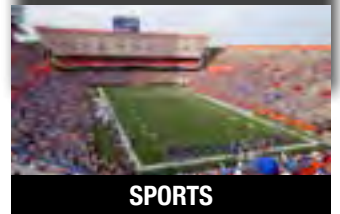
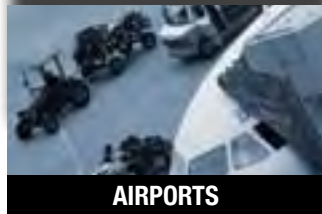
Designed to have the greatest compatibility with all major pan-tilt-zoom camera manufacturers, this series of data radios saves time and money by minimizing installation time and maximizing results. Perfect for alarm systems, remote gates, PTZ cameras & equipment control.



ADVANTAGES

- Rugged All-Weather IP-67 enclosures
- License free range **up to 7 miles**
- Compatible with most PTZ camera systems and other data sources
- RS-422, RS-485, or RS-232 compatible
- Excellent penetration through walls
- Point-to-Point or Point to Multi-Point capable
- Data outputs from sensors, gauges or alarm
- Perfect for Gates, parking lots, highways, warehouses, refineries, power stations, or other commercial and industrial applications
- One year limited warranty

APPLICATIONS INCLUDE



SPECIFICATIONS

OPERATING FREQUENCY	902MHz – 928MHz Digital Spread Spectrum
MODULATION	Frequency Shift Keying (FSK), Direct FM
ANTENNA TYPE	3dB Omni-Directional Rubber Duck
ANTENNA CONNECTOR FORMAT	TNC - Male
DATA FORMATS	RS-422, RS-485, or RS-232
PROGRAMMABLE DATA RATES	2400bps – 57.6Kbps
RF POWER / SENSITIVITY	140mW @ – 107dBm
TEMPERATURE RANGE	-40°F to +170°F
OPERATING VOLTAGE	7 – 18 VDC – Polarity Protected
POWER SUPPLY	Included 12VDC - Model # PS-1250c
CURRENT CONSUMPTION	190mA @ 12VDC - Polarity Protected
DIMENSIONS	7.0" x 7.0" x 4.0"
MOUNTING BRACKETS	Included – Universal Wall / Pole Mount
WEIGHT	32goz or 0.9kg
FCC / IC / CE APPROVED	Yes

KIT INCLUDES

- ALL WEATHER DATA TRANSMITTER
- ONE 12 VDC POWER SUPPLY
- ONE RUBBER DUCK ANTENNA
- ONE UNIVERSAL MOUNTING BRACKET
- ONE DB-9 PROGRAMMING CABLE AND SOFTWARE
- OWNER'S MANUAL
- ONE YEAR LIMITED WARRANTY

