

Video Vault

Efficiently preserve, store and retrieve video



Features and Benefits:

- Pull the video needed whether a facility is open or closed
- Provides a complete system for referencing event timelines and video clips
- Store unlimited amount of video clips
- Organize video clips by category of events for easy reference in the future
- Connect up to 128 DVRs (Intellex, HDVR, ADTVR) and one VideoEdge NVR
- Archive imported video to as many as 24 pre-programmed hard drive locations
- A .bmp image may be associated automatically with each video clip
- Thumbnail images can be created on the first frame of each video clip
- Enables all video clips from an Intellex alarm or an EntraPass video alarm to be automatically stored as .AVI files or Kantech Video Intellex (.KVI), Kantech Video Archive (.KVA) and American Dynamics Network Client video format (.IMG)
- Provides a video library where clips are stored, organized and tagged for future reference
- A simple add-on to existing software, simply purchase the license to include Video Vault to the EntraPass Software

How Fast Can You Find Video Clips?

Last Thursday the security dept of a busy finance company was notified that two important files were missing from a secured, but heavily trafficked storage room. According to the complainant, the theft occurred somewhere between 12:00 – 2:00 p.m. (during the height of the busy lunch time).

For many companies, it can take hours to find the corresponding video to the access control event. That's how much video they would need to weed through – one clip at a time - before they could find the correct video clip. Those hours can translate into valuable lost evidence and money.

But for someone using Video Vault? It can take only minutes or even seconds.

EntraPass Video Vault is a superior video archive management tool that is more reliable and more efficient than any other like it in the market. Video Vault's unique cataloging process allows businesses to preserve, store and retrieve important video quickly and easily.

Works on Your Existing Network

Installed on the network, Video Vault offers an alternative to manually saving each video clip one-by-one. Simply pre-define groups for the video clips (such as door forced open or rejected card) and Video Vault saves them to the appropriate group based on whatever schedules are chosen. Businesses can filter the saved video by priority, event or even by a specific clip – making it extraordinarily easy to find specific clips when you need to do so.

Video Vault can connect up to 128 DVRs (Intellex, HDVR, ADTVR2) and one VideoEdge NVR via integration with EntraPass and can archive the imported video to as many as 24 digital storage devices. Save an unlimited number of video clips - storage is only limited by the hard drive space of your business. And, should the video recorder suffer any damage, Video Vault saves a duplicate version of each clip for maximum safeguarding of video evidence.

Designate video file type prior to saving: choose from .KVI, .KVA (both of which can be password-protected), or .IMG, or .AVI. You can even organize your video clips as .bmp images in lieu of icons. Select the first frame (taken from the onset of pre-alarm footage), the event frame (which coincides with the precise moment of the alarm), or any other frame within the clip.

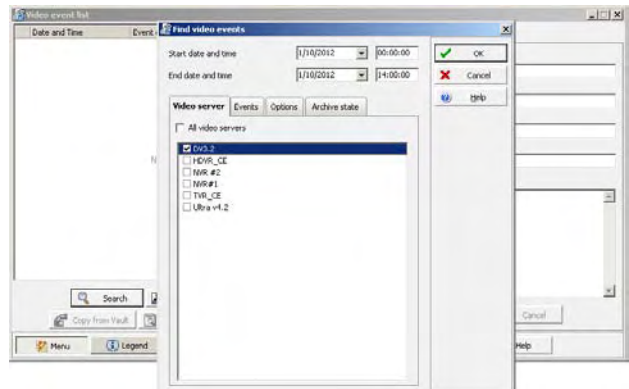
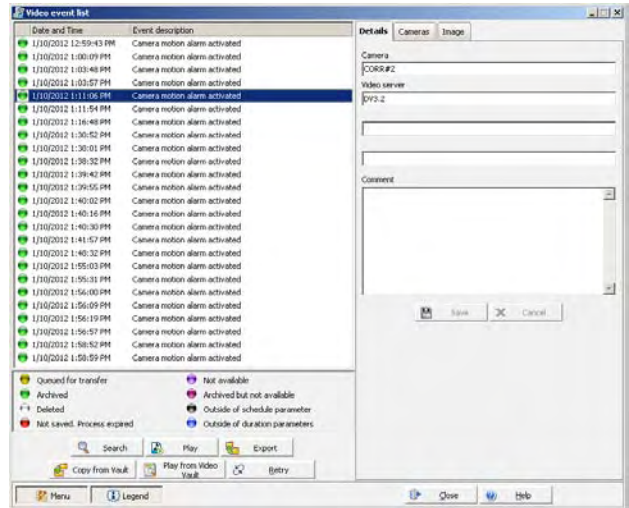
Ideal for a Variety of Applications

Video Vault is ideal for banks, schools, healthcare facilities, law enforcement...any application with multiple locations and a high demand for recorded video. With Video Vault, customers can enjoy the peace of mind knowing that their facility is secure with EntraPass and supporting video evidence is just a few clicks away. Multiple instances of Video Vault can run on the same system to limit the bandwidth usage between buildings, and video can be stored locally or per region.



Here is what one customer tells us about his success with Video Vault

"In my line of work, retrieving video evidence quickly is paramount. Video Vault from Kantech makes it fast and easy to find specific video clips instead of weeding through hundreds of clips manually. It would certainly be more difficult to do my job without it," said Sylvain Grenier, Joint Director – Administration Services, Repentigny Police Department.



Ordering Information

EntraPass Corporate Edition

Each EntraPass Corporate Edition software package includes: two additional Workstation licenses, one Server/Workstation license, one Multi-Site Gateway license and one WebStation license

- E-COR-EN-V5 EntraPass Corporate Edition v5.xx software and user manual, English
- E-COR-FR-V5 EntraPass Corporate Edition v5.xx software and user manual, French
- E-COR-WM VideoVault license

EntraPass Global Edition

Each EntraPass Global Edition software package includes: four additional Workstation licenses, one Server/Workstation license, one Global Gateway (Windows NCC) license and one WebStation license

- E-GLO-EN-V5 EntraPass Global Edition v5.xx software and user manual, English
- E-GLO-FR-V5 EntraPass Global Edition v5.xx software and user manual, French
- E-GLO-WM Video Vault license

Related Products



EntraPass



VideoEdge NVR



HDVR



Intellex

Approvals



8641 S. Warhawk Rd. Conifer, CO 80433
 Patrick.McAllister@EntraPASS.com
 (303) 670-1099 (303) 679-8949 fax

Trademarks, logos, and service marks displayed on this document are registered in the United States [or other countries]. Any misuse of the trademarks is strictly prohibited and Tyco International Ltd. will aggressively enforce its intellectual property rights to the fullest extent of the law, including pursuit of criminal prosecution wherever necessary. All trademarks not owned by Tyco International Ltd. are the property of their respective owners, and are used with permission or allowed under applicable laws.

Product offerings and specifications are subject to change without notice. Actual products may vary from photos. Not all products include all features. Availability varies by region; contact your sales representative.
 © 2012 Tyco International Ltd. and its respective companies. All rights reserved. KT0245-DS-201203-R01-LT-EN