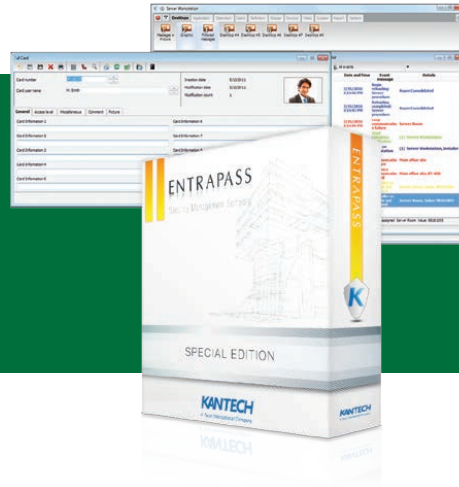


EntraPass Special Edition Single Workstation Security Management Software



Features That Make a Difference¹:

- NEW! Support for ioSmart Smart Card Readers & Cards
- Automatically move legacy controller to KT-1 and KT-400 door controllers eliminating the need to reprogram
- Fast/user-friendly installation and operation
- Integrates with Telephone Entry System (KTES)
- Built-in e-mail reporting capability
- Integrates with Exacq video management systems and American Dynamics DVRs/NVRs (HDVR, ADTVR and Intellex)
- Integrates with DSC PowerSeries, PowerSeries Neo and MAXSYS intrusion alarm panels
- Double and triple swipe card at reader (with KT-1 and KT-400 controller) to activate such features as activate relay, arm alarm system and lock/unlock doors
- Cost effective, yet feature rich access control starter and expansion kits available
- Easily add ASSA ABLOY Aperio wireless locks to KT-400 or KT-1-M door controllers

Single Workstation System

EntraPass Special Edition is a single workstation security software. It controls up to 64 door controllers (consisting of KT-400 and KT-1 controllers). The software is comprehensive and menu-driven. It is easy to learn and operate. Administrators can define or modify parameters such as schedules or access levels, generate reports and activate controlled devices (i.e. locking/ unlocking doors, or activating relays for lighting or air conditioning). EntraPass offers full integration with Exacq video management systems, American Dynamics DVRs/NVRs (HDVR, ADTVR and Intellex), and DSC PowerSeries, PowerSeries Neo and MAXSYS intrusion alarm panels.

Express Setup

Express Setup allows you to configure system components such as sites and controllers, as well as devices associated with these components such as doors and inputs. This utility reduces programming to a minimum, allowing the installer to test the installation and system components.

Site Architecture

A site within EntraPass represents a customer's building, campus, etc. and is composed of many different connections, which have multiple door controllers attached. EntraPass supports the use of third party card readers as well as Kantech's ioSmart and ioProx readers. ioSmart readers provide end-to-end AES 128-bit encryption between the ioSmart card and ioSmart reader, ioSmart reader and KT-1 and KT-400 controllers over RS-485 and the aforementioned controllers to EntraPass software over IP. ioProx readers feature a highly secure 39-bit XSF format and can be connected using existing CAT5e cabling for installation cost savings. EntraPass software is highly scalable and can seamlessly expand as the security requirements of your business grow.

Video Integration

Real-time monitoring capability is a response to the growing importance of integrated access control and security management systems. Integration with Exacq video management systems and American Dynamics DVRs/NVRs (HDVR, ADTVR, Intellex and INTEVO) provides real-time video monitoring as well as video playback. Video can be linked to access events (such as "door forced open") and recorded from one to 16 cameras from compatible DVRs/NVRs simultaneously. All cameras can be called up directly from a floor plan simply by double-clicking on the camera or dome icon.

Telephone Entry Integration

Apartment, condominium and office buildings are just a few of the applications where security and communications are required for controlling resident and visitor traffic. The Telephone Entry System (KTES) delivers a fully integrated telephone entry and access control solution. The KTES provides visitor/resident entry, tracking and reporting. It also features two-way built-in audio and a touch-tone phone style keypad that offers both familiarity and ease of use.

Alarm Panel Integration

By integrating all security assets such as intrusion detection, access control, video and telephone entry into one common platform, users can interface with just one system, for greater simplicity and optimum control. Kantech offers integration kits to connect a DSC intrusion alarm panel to a Kantech access control system to create a single integrated solution. Data integration with DSC PowerSeries, PowerSeries Neo or MAXSYS intrusion alarm panels allows the access control system to receive intrusion events, view zone status and to manage partitions/user codes.

¹ All of the features listed on this data sheet are available with the latest build of EntraPass v7.30 and higher

Minimum System Requirements

Processor (without video integration)Intel® Core™ 2Duo 2.6 GHz or more
 Processor (with video integration)Quad Core
 RAM4GB or more
 (8GB with video integration)
 Free Hard Disk Space for Software50GB
 Screen Resolution1024 x 768; 48X CD-ROM drive
 Graphic Adapter CardPCI express graphics card with 512MB
 (1GB with video integration) memory
 and DirectX 9.0 support
 Color Depth.24-bit (16 million colors), required for
 video integration
 Network Interface Card10/100/1000 Base-T network adapter
 (Gigabit or greater with video
 integration)

Operating System Compatibility

Windows 10 Pro/ Enterprise, Windows 7 Pro/Enterprise/Ultimate, Window 8 and 8.1 Enterprise, Windows Server 2008 R2 Standard/Enterprise, Windows Server 2012 Data Center. All operating systems are supported in 32 and 64-bit version. All operating systems should have their latest Service Packs and updates.

For integrations, validate specifications of products used.

Virtual Environment SupportedVMware Workstation v7 and higher



System Capacities

CardsUnlimited
 Cards per Controller in Stand-Alone Mode
 KT-100 (6,000), KT-200 (3,000), KT-300/128K (8,000),
 KT-300/512K (56,000), KT-400 (100,000), KT-1 (100,000)
 Card Families or Site CodesUnlimited
 Number of SitesUp to 64 (Max. 64 controllers)
 Door Controllers per Site.32
 Compatible ControllersKT-1, KT-200, KT-300, KT-400
 Card Readers/Keypads
 KT-1, KT-100/KT-300 (128 per system), KT-400 (256 per system)
 Monitored Points (Input)
 KT-1/KT-100 (128 per site), KT-300 (512 per site), KT-400 (8,192 per site)
 Card User Access Levels250 per site
 Access Level Combinations.Unlimited
 Schedules100
 Time Intervals per Schedule4
 Holidays366 per system
 Holiday Types4
 System Operator Passwords.Unlimited
 Operator Security LevelsUnlimited, pre-defined (3)
 Concurrent System LanguagesTwo
 Number of PrintersOne log printer; one report printer;
 optional badging printer

Integration Capabilities

Intrusion
 DSC PowerSeries (PC1616, PC1832, PC1864, PC4020), PowerSeries Neo (HS2016, HS2032, HS2064, HS2128) and MAXSYS (PC4020) Alarm Panels

Video
 Exacq VMS v7.8.1 and American Dynamics DVRs/ NVRs including HDVR (4.3.0.374 and previous versions), ADTVR (first gen v2.2; second gen v2.5), Intellex and the INTEVO platform). Intellex Ultra, DVMS and IP all require Entrapass software v3.1 or higher, Intellex LT requires software v2.6 or higher. Panasonic video recorders (requiring option E-COR-DVR-1): WJ-HD309A/316A/616/716, WJ-ND200/300/400.